

West Midlands Regional Adaptation Network (RAN)

Thursday 11th December 2025



West Midlands
Combined Authority



Greener
Together

Welcome and Introduction

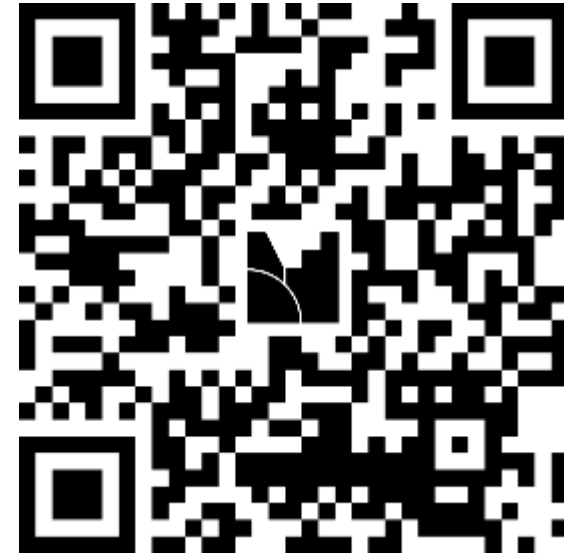


Purpose of the Regional Adaptation Network (RAN)

To connect and build the skills and knowledge of people who have a role in preparing the region for climate change. The Network is part of the new, wider West Midlands Adapt project.

Mentimeter poll

- What sector do you represent?
- How familiar are you with climate adaptation?



Mentimeter QR code
Join at menti.com



Agenda

Time	Item	Speaker
13:00-13:10	Welcome and high-level introduction to WM-ADAPT and the RAN <ul style="list-style-type: none">What will today's meeting cover?	Beth Haskins & James Hodgson
13:10-13:40	RAN member presentation slot: Engagement with faith-based groups for climate resilient communities	Angella Del Mundo, Footsteps
13:40 – 14:05	WM-Adapt Community Engagement Update <ul style="list-style-type: none">Wild weather world cafes – purpose, structure and why this mattersKey insights from across the West Midlands – interview with a community researcherIntroducing the Wild Weather Community Engagement Handbook	Hali Healy Marianne Walker Debra Gordon
14:05-14:35	Breakout discussions: the potential of community engagement for climate adaptation Facilitators: Hali Healy, Marianne Walker, James Hodgson, Emma Ferranti, Jessica Pykett & Sarah Greenham	All – facilitators lead rooms
14:35-14:45	Breakout plenary Facilitators summarise their room's discussions	Beth Haskins & James Hodgson
14:45-15:00	Wrap up <ul style="list-style-type: none">There's still time! Register to undertake the adaptive capacity surveyDon't forget the Climate Adaptation Literacy courseForward plan – what's coming up in the year ahead?Feedback please: mentimetre and MS Form.	Beth Haskins & James Hodgson

Angella Del Mundo

Footsteps – Faiths for a Low Carbon Future

Project: Sacred Spaces, Resilient Places

Sacred spaces, Resilient places

A hands-on investigation into how Birmingham's places of worship can strengthen their communities by becoming adapted, locally rooted hubs for climate resilience.



Footsteps

Faiths for a Low Carbon Future



BIRMINGHAM CITY
School of Architecture
and Design

FOOTSTEPS DEVELOPMENT

2015

Footsteps formed, Paris Climate Conference, Faith Walk of Witness

2016 – 2020

Environmental “walks”, workshops, young-people summer programmes, and “Tread Lightly” events to promote low-carbon faith action.

2020 – 2022

To survive lockdown, Footsteps successfully held numerous webinar and online events.

2022 - 2025

Following its role representing faith communities on the BCC Route to Zero Task Force, Footsteps became more involved in shaping a just transition to a low-carbon future.



INTERFAITH & VALUES-BASED APPROACH



FOOTSTEPS JUST TRANSITION WORK

Project 4F

Faiths For a Fair Low Carbon Future

Supported Birmingham faith communities in taking climate action focusing on: energy use, fuel poverty, waste reduction, plus faith building mapping, building assessments, energy advice, and radio outreach.



BrumEnergy

Footsteps partnered in the BVSC-led, DESNEZ-funded Brum Energy project to deliver community-level energy advice across Birmingham.



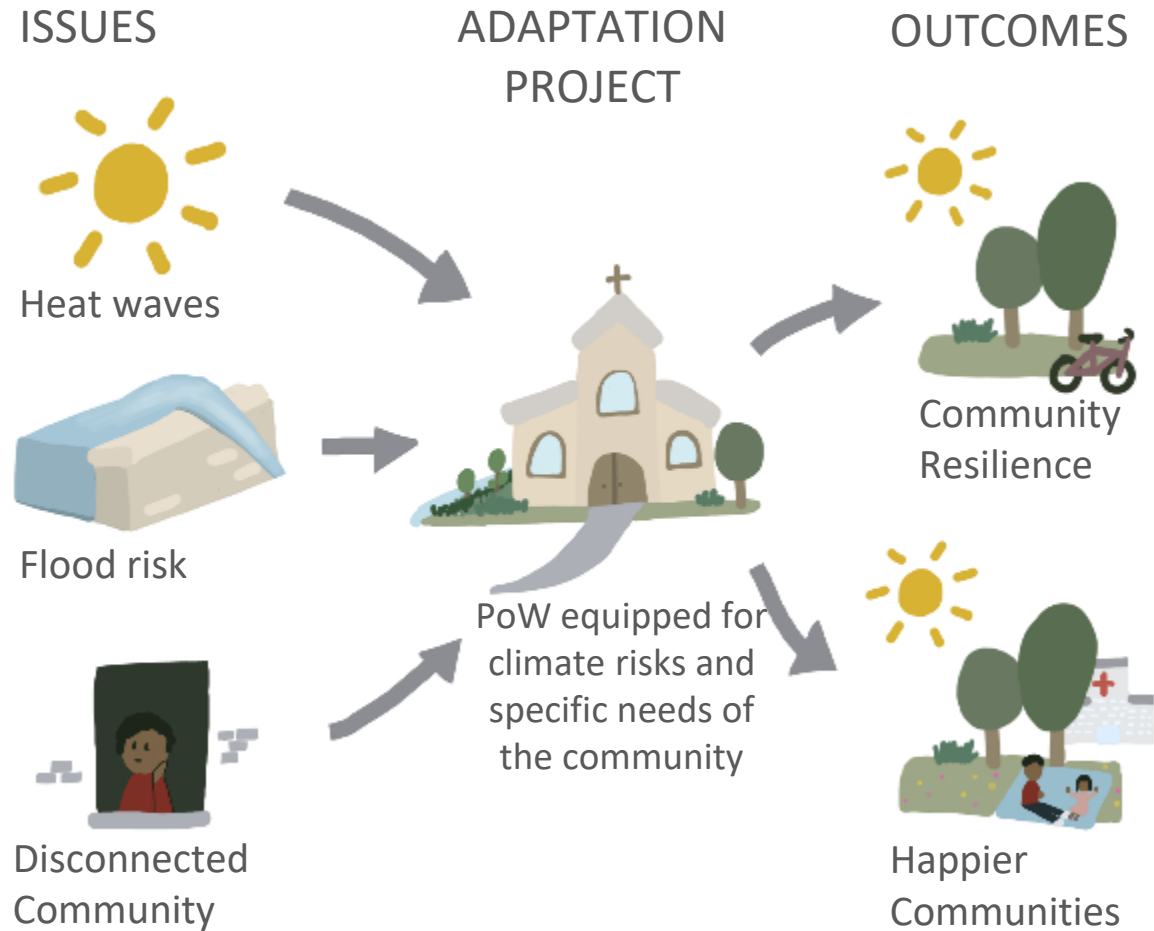
GrassRoutes

A collaboration funded by Esmée Fairbairn to build the capacity of Birmingham's faith communities to lead practical eco-action projects that respond to the environmental and climate crisis.



CLIMATE RESILIENCE vs. ADAPTATION

We'd love your insight — scan the QR code to answer this question:



Q: What positive environmental or climate-related behaviours have you seen encouraged by community buildings, and how?

Co.Lab

BCU's interdisciplinary design-research module (architecture, landscape, interior, product design).

Embracing experimentation, real-world prototyping, and innovative exploration.

Runs Jan–April.

Focused on real-world, hands-on, collaborative projects with community impact.

BHX_
Co\\LABORATIVE
LABORATORY:

Utilizing co-development style to drive innovative, socially-driven design responses.

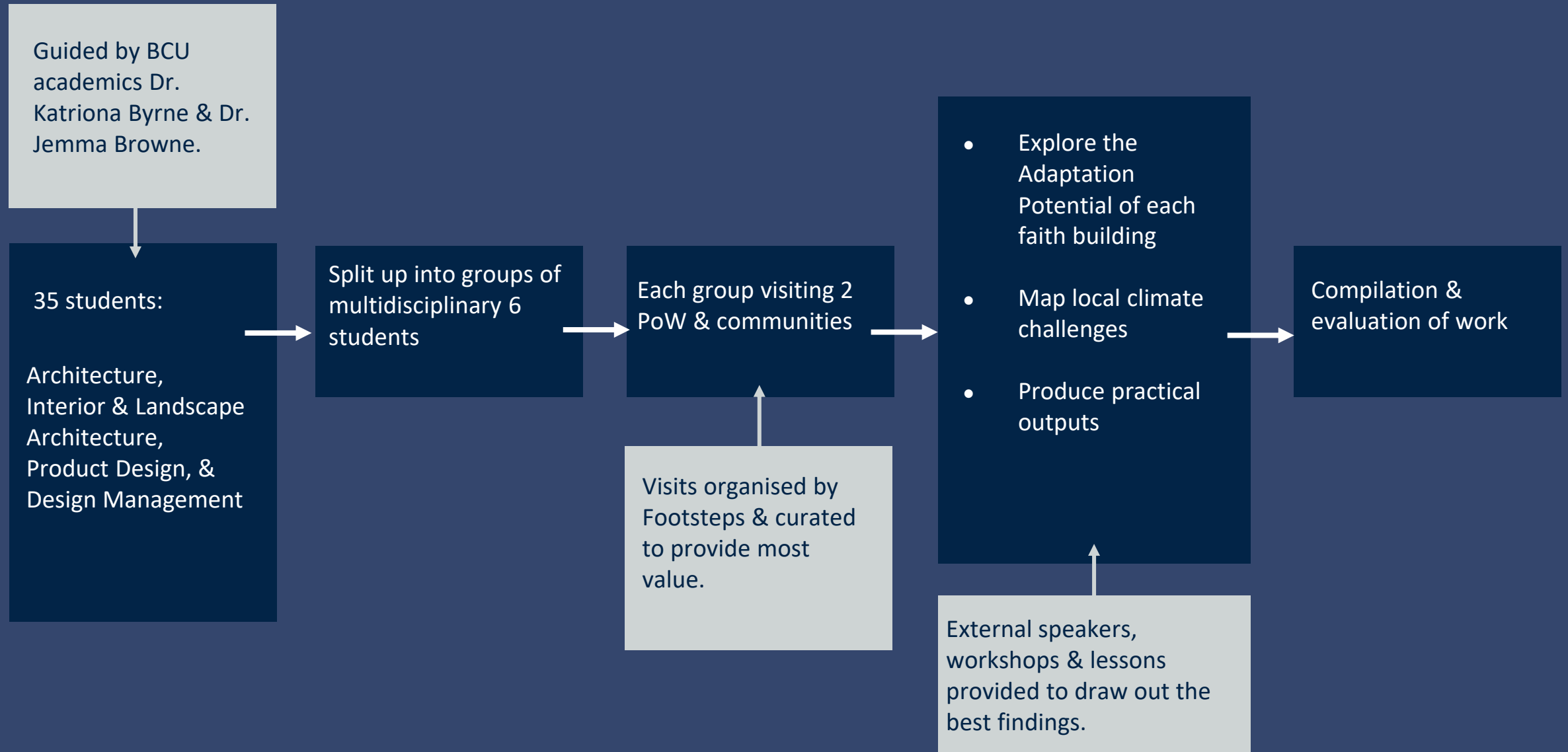
Project Example: “Birmingham Outer Circle” (2023–24)

Partner: West Midlands National Park Lab

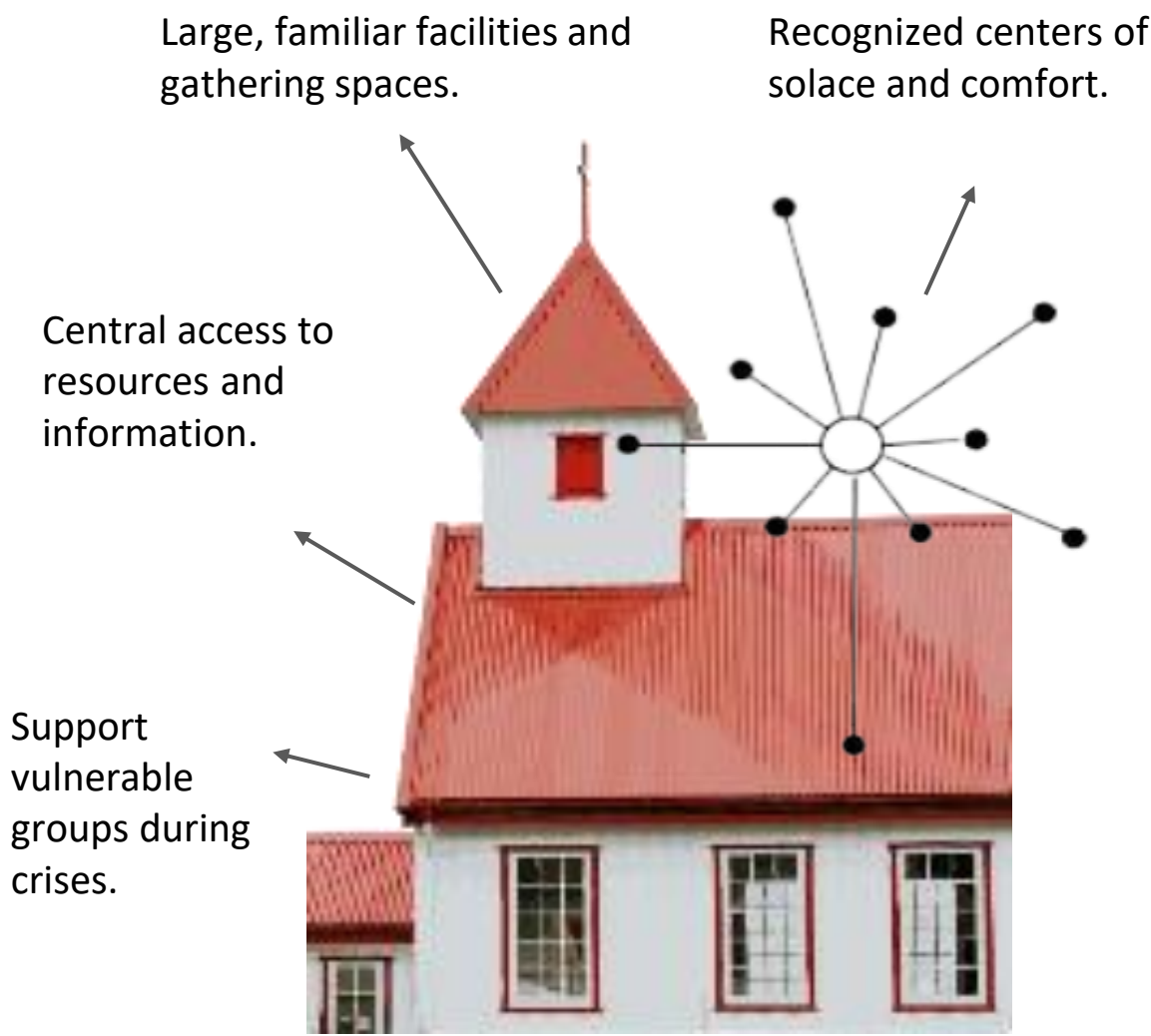


Reimagined the Outer Circle bus route to explore Birmingham's communities and landscapes. Students proposed interventions celebrating local identity, ecology, and connection, inspiring partners toward a more resilient city.

HOW WILL CO.LAB WORK?



PLACES OF WORSHIP AS A RESILIENCE HUB



Used as vaccination centres



Used as shelters for rough sleepers



Contributors to local economy

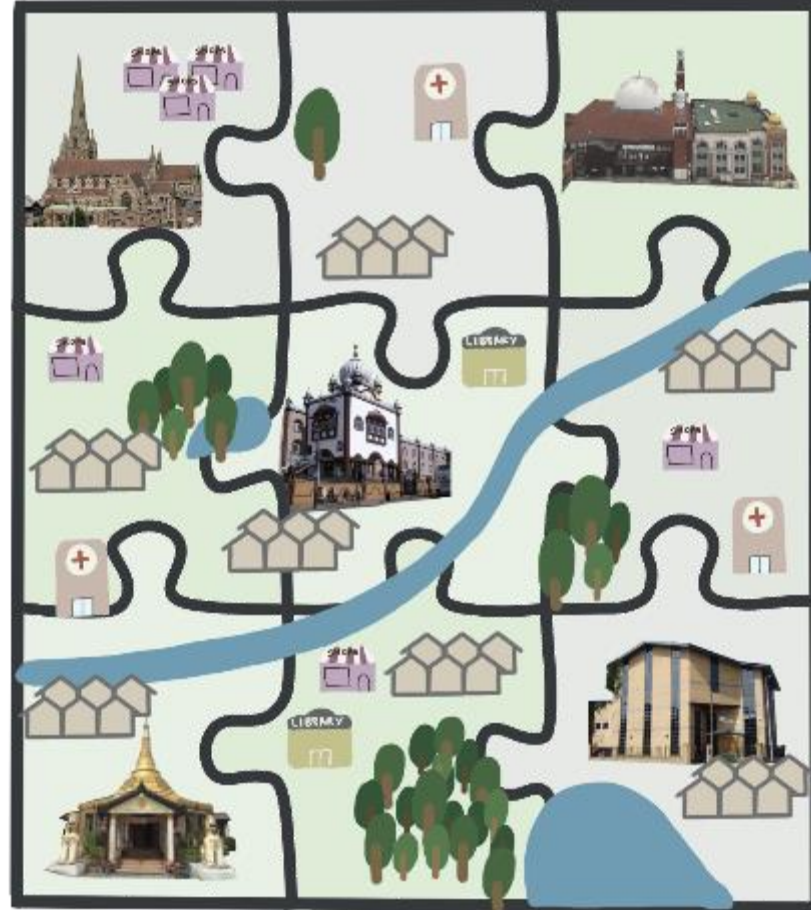
PLACE - BASED APPROACH

**Local Needs, Local
Solutions**

More Cost-Effective

**Captures Real Lived
Experiences**

**Supports Fairness and
Equity**



**Builds Trust Through Community-Led
Design**

**Unlocks Co-Benefits
Beyond Climate**

**Integrates Heritage,
Culture and Sustainability**

Image isn't drawn accurately

Map Climate Challenges at Community Level

Identify how different neighbourhoods experience climate pressures and local environmental risks.

Identify the Adaptation Potential of Faith Buildings

Explore the practical roles places of worship could play during climate stresses and community needs.

Understand Community Concerns and Early Climate Impacts

Capture lived experiences such as heat, damp, flooding anxiety, poor air quality and rising costs.

Start prototyping Faith-Based “Climate-Ready Hub” Models

Develop practical and scalable concepts for faith buildings as local centres of climate support.

THANK YOU AND ANY QUESTIONS WELCOME

If you want to get involved, email Angella (project manager) at: angella@footstepsbcf.org.uk

SACRED SPACES, RESILIENT PLACES AIMS

Map Climate Challenges at Community Level

Identify how different
neighbourhoods experience
climate pressures and local
environmental risks.

Identify the Adaptation Potential of Faith Buildings

Explore the practical roles places of
worship could play during climate
stresses and community needs.

Understand Community Concerns and Early Climate Impacts

Capture lived experiences such as
heat, damp, flooding anxiety, poor
air quality and rising costs.

Start prototyping Faith- Based “Climate-Ready Hub” Models

Develop practical and scalable
concepts for faith buildings as local
centres of climate support.

For what purpose(s) do you engage with the public regarding climate risk management?



Mentimeter QR code
Join at menti.com

WM-Adapt WS1: Wild weather community engagement to date

Wild Weather
World Cafes
(What/Where/
When//Who/
Why)

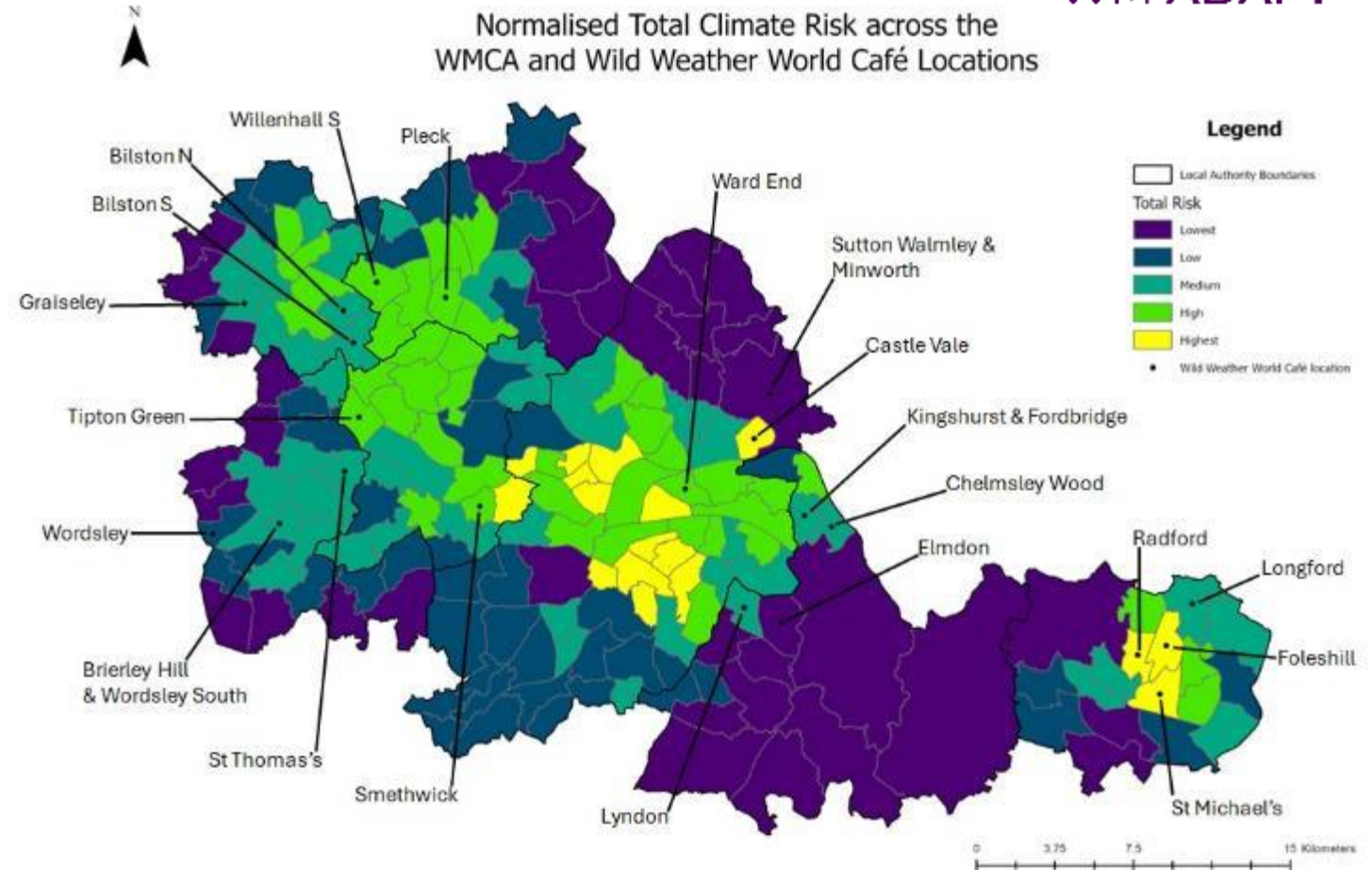
View from the
ground up – A
Community
Researcher's
perspective

Key insights
from across
the West
Midlands

Context of Community Research



- Wild Weather World Cafés May - Nov 2025
- 16 wards in 7 areas based on CRVA scores
- Recruitment - esp. marginal / hard to reach groups (e.g. elderly, ethnic minorities, low income, chronic health issues / disabilities)
 - Most susceptible to damaging effects of climate related extreme weather, least engaged

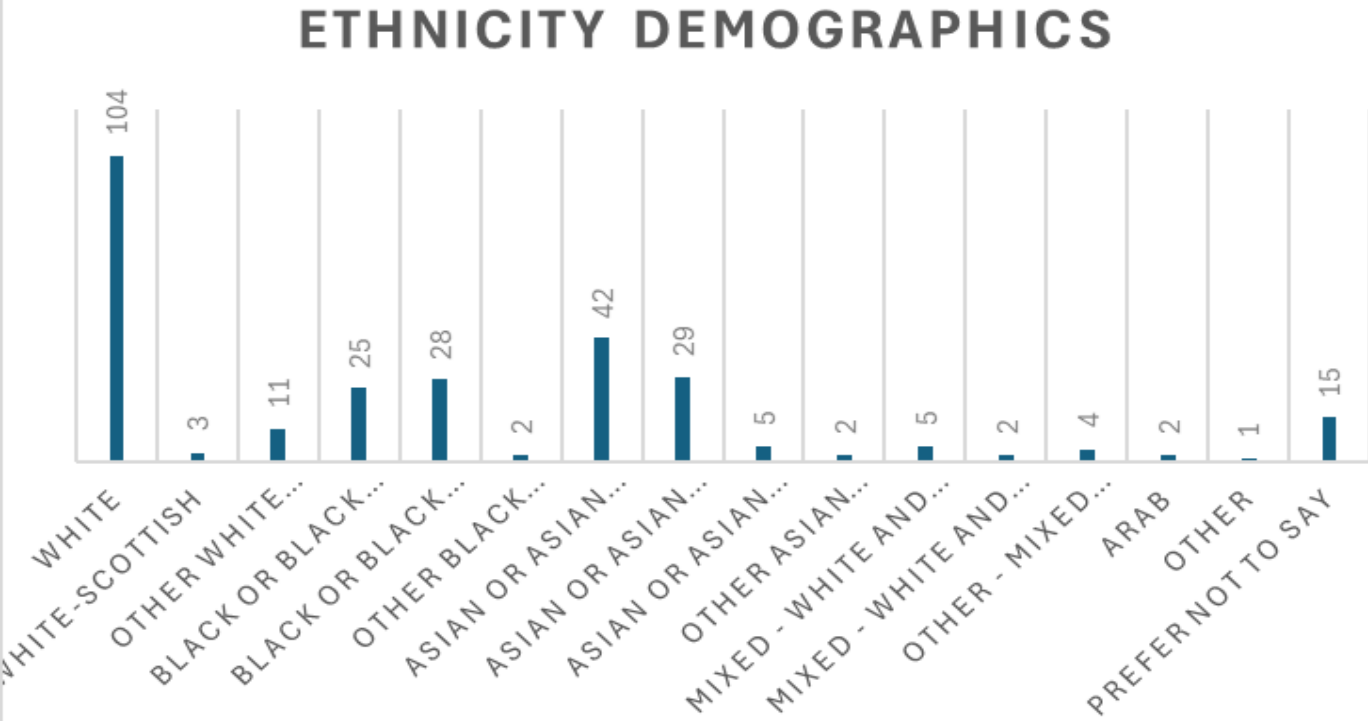
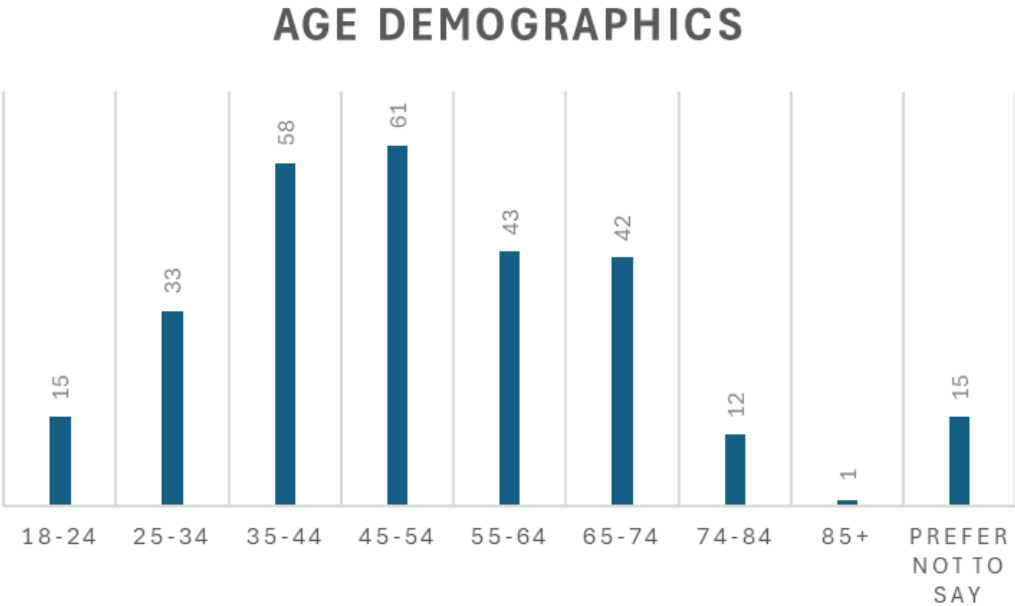
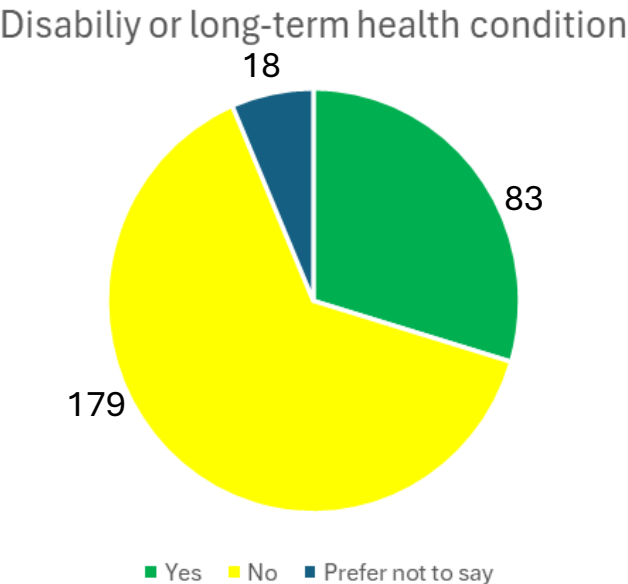
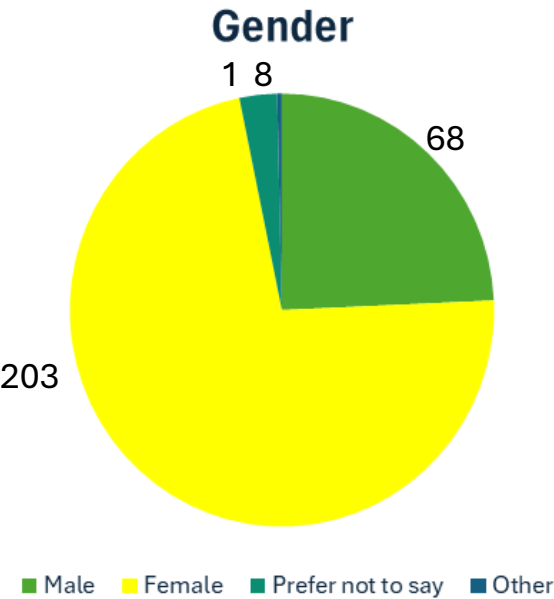


World Café Numbers



Local Authority	Ward	Number of attendees
Birmingham	Castle Vale	20
	Sutton Walmley & Minworth	17
	Ward End	19
Coventry	Foleshill/Longford	24
	St Michaels	17
	Radford	21
Dudley	Brierley Hill & Wordsley South	10
	St Thomas	10
Sandwell	Smethwick	27
	Tipton Green	20
Solihull	Kingshurst & Fordbridge / Chelmsley Wood	21
	Lyndon / Elmdon	10
Walsall	Pleck	15
	Willenhall South	23
Wolverhampton	Graiseley	20
	Bilston North & East	12
		Total = 286

Participants' Demographic Profile



Activity	Description (Rationale)
1: Sharing experiences of extreme weather	“What kind of extreme weather have you experienced & how has it affected you / your neighbourhood?”
2: Assessing responses to extreme weather	“Who are the responders to extreme weather in your neighbourhood? What has been done well, & what could be done better?”
3: What can adaptation look like in your neighbourhood?	Participants tour exhibition of adaptive measures (local/regional/natl / global) with traffic signal voting. "What do you think / feel?"
4: Protecting what matters	“What do you value & want to protect in your neighbourhood, how (in the short & long term), & why?”

Wild Weather World Cafes Purpose, structure and relevance



Purpose

- Understand local experiences of extreme weather/responses, attitudes toward adaptation, and priorities

Structure / Approach

- Learn about lived experience in a way that leads to constructive dialogue
- LAs not present (facilitators as intermediaries)

Relevance

- Research/analysis
- Local knowledge: CRVAs, RAPAs, RAN
- Legal/policy obligations to ensure participation in climate governance

Key insights from across the West Midlands: Experiences of extreme weather



Extreme temperatures

Universal and multigenerational

Physical health effects:
Heatstroke, flu, accidents & injuries
Menopause

Physical health effects:
Chronic illness - arthritis, allergies, asthma, diabetes, cardio-pulmonary disease

Mental health
(exacerbates & causes - financial stress and isolation)

Heavy rain / flooding

Damage to homes, income, infrastructure

DRAINAGE

Physical health - damp/mould

Mental health - isolation, anxiety, cost

Strong winds

Damage to homes/property,

Danger to / in public places, feeling unsafe



Key insights from across the West Midlands: Responses and Responders



“They [the local authorities] only do those improvements in the well-off areas.”
(Foleshill and Longford)

“We really depend on our community centre but their funds are shrinking and the number of people that rely on it is growing.”
(Smethwick)

“We need to stop ‘putting out fires’ and build a more joined-up, proactive approach.”
(Lyndon and Elmdon)

- **Met office / local news** warnings helpful, but information on what to do lacking
- **Emergency services** such as fire & ambulance praised, but under strain
- **Local authorities** mixed reviews – gritting and drainage
- **Landlords** not maintaining properties - Better (enforced) regulations
- Local **charities/community centres** vital, but struggle financially
- Neighbours / **neighbourhood networks**, “but there's only so much they can do”.
- More **co-ordinated responses**



Key insights from across the West Midlands



Attitudes toward adaptation

High levels of awareness of climate change and impacts and need to adapt at household level, but worried about **costs and trade-offs**

“These are all really do-able. The problem is cost. What will we have to give up?”
(Brierley Hill and Wordsley South)

Open to wide range of proposals/solutions, but concerned with **responsibility, and long-term maintenance**

“Great ideas, but who is going to maintain them in the long term? We need to know who is responsible.” (Castle Vale)

In most deprived areas, **adaptive needs are intertwined with basic needs** (vs more affluent areas concerned with protecting/maintaining green spaces)

“We can’t use the park in summer when it’s hot because there isn’t enough shade and it’s full of rubbish and vermin” (Ward End)

Key insights from across the West Midlands: Local Priorities



Places

- Homes / housing
- Community hubs
- Parks / green spaces

Infrastructure

- Transport systems
- Water supply / drainage systems
- Health / education institutes
- **Schools**, hospitals, clinics

People

- People with vulnerabilities low income, elderly, children, chronic illness / disability
- Those least able to protect themselves

"Homes should be built with better materials to protect against mould, damp and cold, and to make sure they stay cool in heat waves."
(Graiseley)

"Schools should be kept warm with sustainable, up to date heating systems, adequate insulation and double glazing."
(Tipton Green)

"Winter fuel payments should be maintained and fuel prices kept affordable for the vulnerable, but help should also be provided with bills for staying cool in heatwaves."
(St. Thomas)

What participants said: Rose, Bud, Thorn open feedback session



Closing..



Write on Post-it notes:

- Something you **enjoyed** about the workshop (put near the **rose**)
- Something you **learned that was new or that you are excited about** (put near the **bud**)
- Something you feel is a **challenge / concern** (put near the **thorn**)

"I enjoyed today a lot. It was my first experience to meet with different kinds of people in the UK." (Tipton Green)

"Today changed my perspective on how I can act on the environment."
(Kingshurst and Fordsbridge & Chelmsley Wood)

"There is so much we can do to improve adaptability – I love the ideas of cooling stations & rain gardens." (Smethwick)

Post-Workshop Survey :

"Because of this workshop, I'm more confident talking about extreme weather, ways of preparing for it, & the benefits of doing so in my neighbourhood."

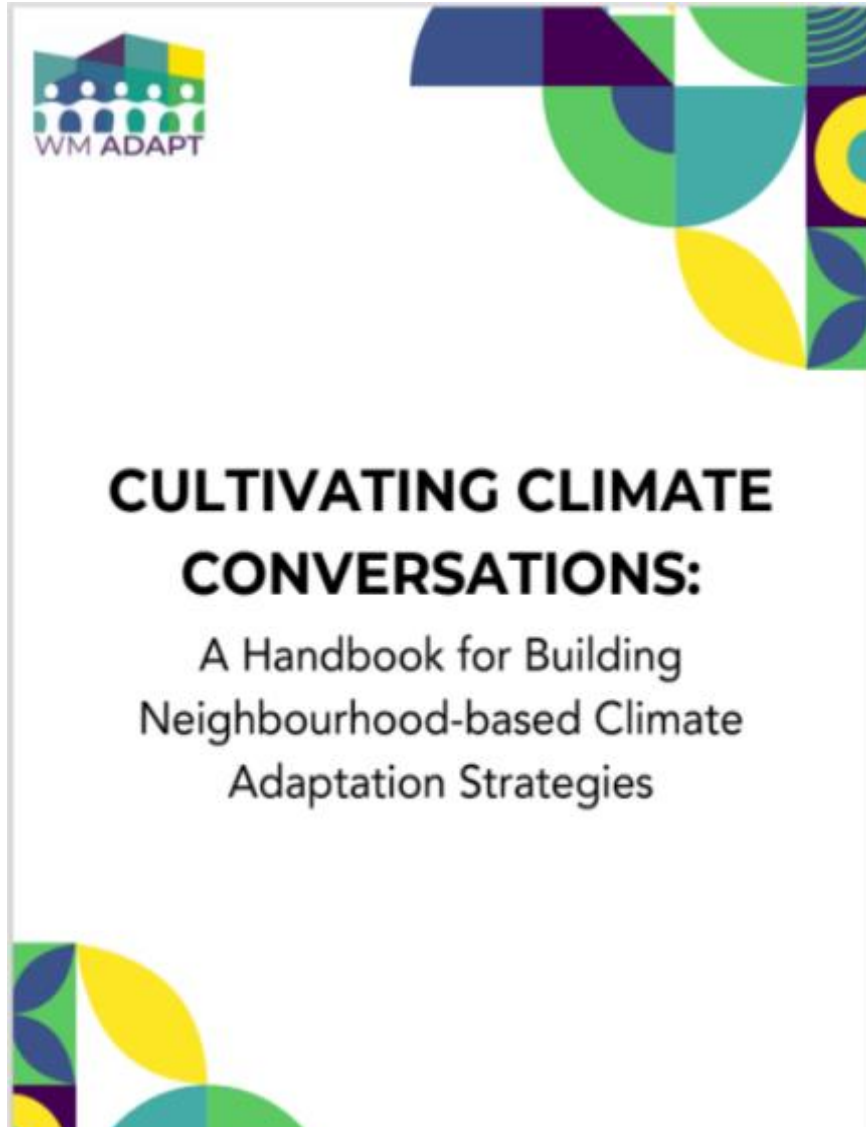
Strongly Disagree - 4 (1.4%), Disagree - 7 (2.5%), Neutral - 31 (11.5%),

Agree - 144 (53%), Strongly Agree - 84 (31%) = 270

Next Steps



- **Individual World Café Reports**
- **RAPA design**
Embed residents' voices and priorities
- **Legacy**
Build & sustain momentum for meaningful, lasting & effective engagement



"Cultivating Climate Conversations - A Handbook for Building Neighbourhood-based Climate Adaptation Strategies"

A view from the ground up –
A community researcher's
perspective: Debra Gordon,
interviewed by Marianne
Walker (BVSC)



Breakout discussions



- Are we truly connecting? What makes your conversations with communities about climate risk strong and meaningful?
- What's stopping you from engaging communities on climate risk—and what would make it easier?
 - How could the Cultivating Climate Conversations Handbook help overcome these blockers?
- How could collaboration with other RAN members improve your community engagement on climate risk and resilience?

[Link to the breakout room Miro boards](#)

Facilitators: Hali Healy, Marianne Walker, James Hodgson, Emma Ferranti, Jessica Pykett, Sarah Greenham & Beth Haskins-Vaheesan

Plenary: feedback from breakout discussions

Opportunity: Apply the Adaptive Capacity Assessment tool to your organisation or remit

Raise your hand if you would like to complete the CaDD survey to receive tailored feedback on your levels of adaptive capacity.

Climate Adaptation Literacy

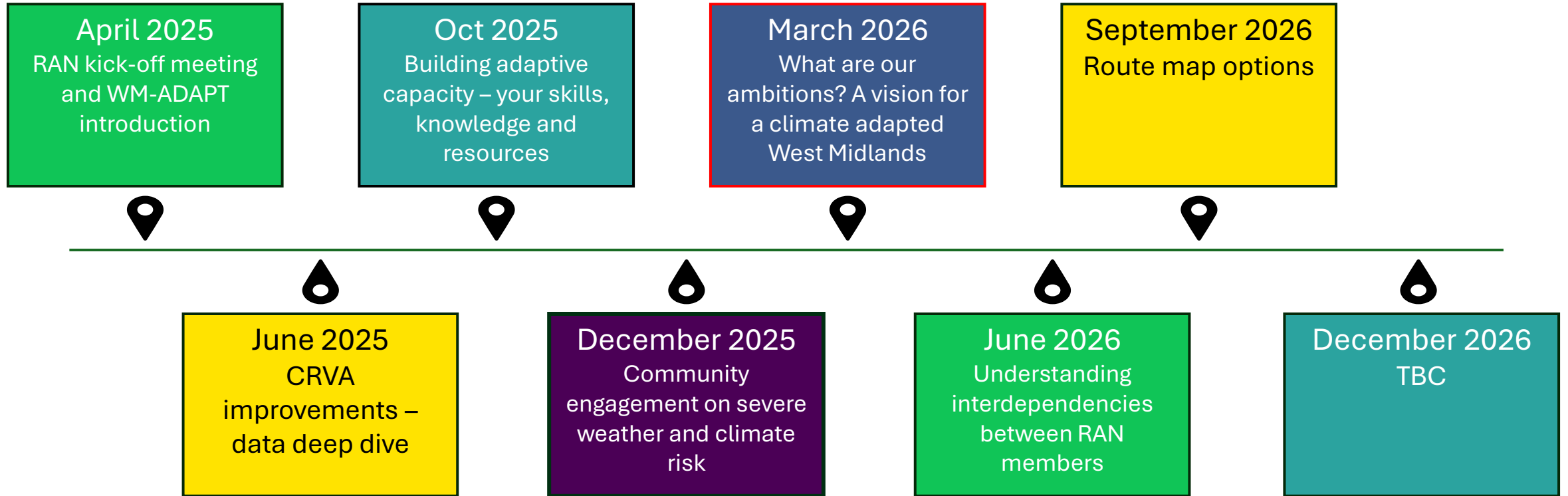


- Online, self-led e-learning course
- CPD accredited
- Receive a CPD certified and digital badge upon assessment
- Est. time – 30-45mins per module
- Complete at your own pace
- Three modules:
 1. Climate change in the UK and why adaptation matters
 2. Zooming in – Climate impacts in the West Midlands
 3. How can we adapt to climate change?

Available here: [West Midlands Climate Adaptation Literacy Training](#)



What's coming up?



Any other business

- Opportunity to access the CaDD
- [Feedback on today's meeting](#)
- Reminder: [RAN Terms of Reference](#)

Next meeting: Tuesday **24th March 2026, 13:00-15:00**

- Exploring community experiences of severe weather
- [Sign up to the RAN's March 2026 meeting](#)

Climate Adaptation Literacy Course

- West Midlands specific
- 3 modules of self-led content
- Upskill on climate risks and adaptation options
- CPD accredited upon assessment
- No cost
- Available here: [West Midlands Climate Adaptation Literacy Training](#)



Mentimeter QR code
Join at menti.com